

SSLVPN Update (10/10/2006)

A new version of SSLVPN will be available beginning Tuesday 10/10/2006. The new version introduces a slight change to the look and feel of the interface that results in one less step to start a VPN session.

In the old version, starting a VPN session was a two-step process in which users had to click on a "Client Applications", and then click on a "Start Session" button, as shown in figures 1 and 2 below.

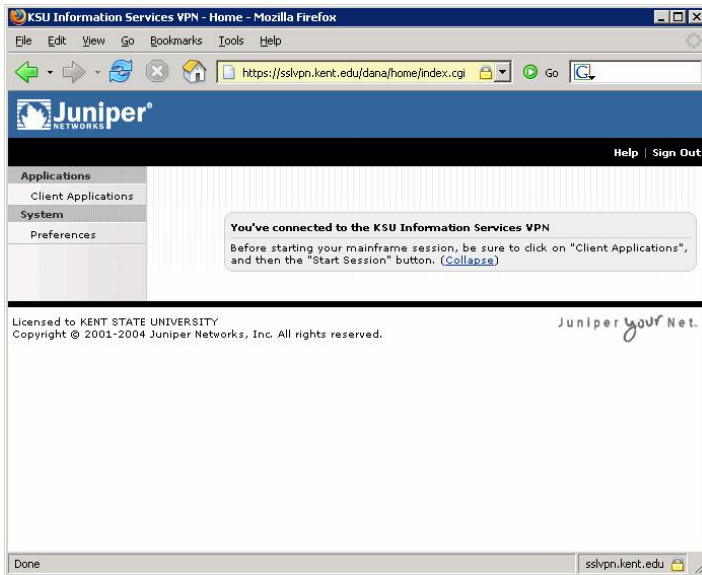


Figure 1: Welcome screen

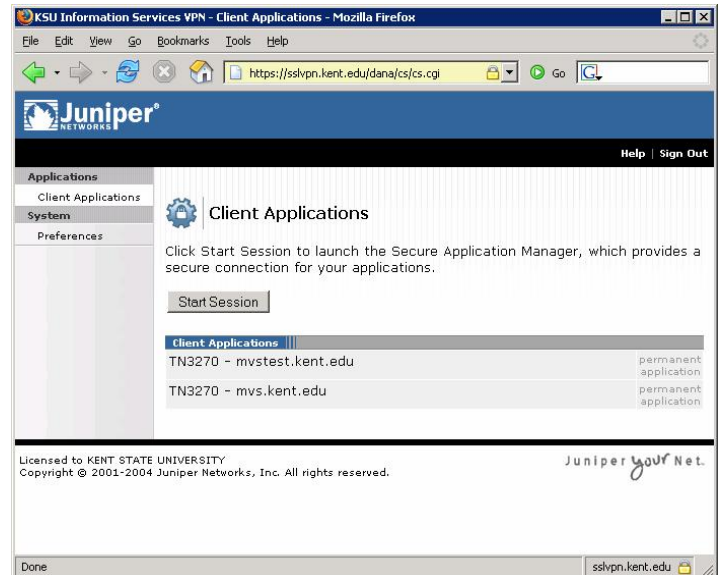


Figure 2: Client Applications screen

The new version of SSLVPN removes the first step, and instead provides a Java Secure Application Manager "Start" button immediately on the first screen after login, as shown in figure 3 below.

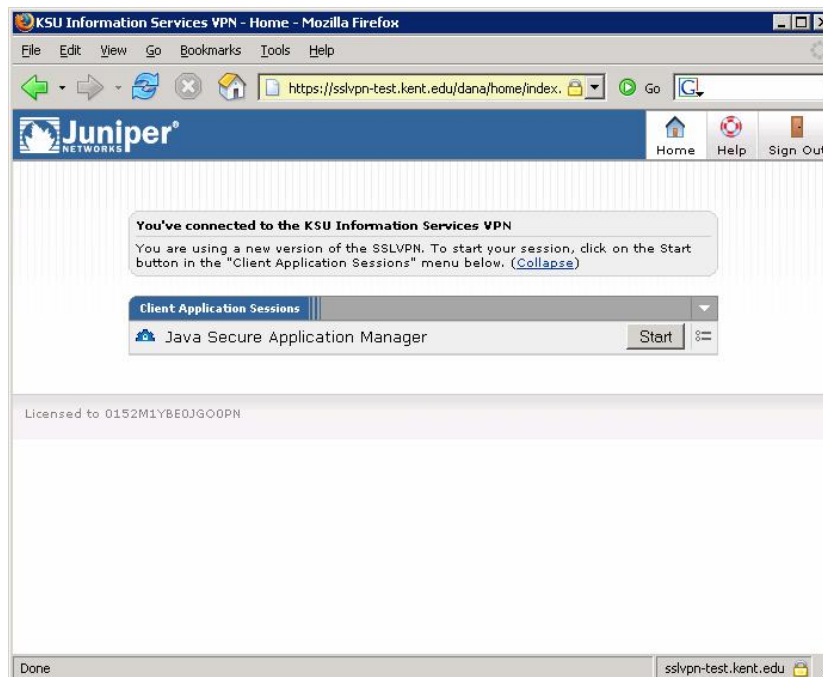


Figure 3: New welcome screen with "Start" button

All other screens and instruction remain unchanged in the new version.